

NuLite NEW ENERGY
One Step Ahead
of Comfort Life!



THE PILOT SERIES

Monoblock DC Inverter Heat Pump

DHW/Heating/Cooling Air Source Heat Pump Expert
Heat Pump Expert



NL-BKDX30-95II/R, NL-BKDX40-150II/R



NL-BKDX50-200II/R, NL-BKDX60-220II/R, NL-BKDX80-300II/R
NL-BKDX100-400II/R

Product parameter

Model name		NL-BKDX30-95II/R	NL-BKDX40-150II/R	NL-BKDX50-200II/R	NL-BKDX60-220II/R	NL-BKDX80-280II/R
Rated heating capacity	KW	2.8~10	3.8~15.5	4.5~20	5.6~22	7.2~30
Rated hot water capacity	KW	2.5~9.5	3.5~15	4~19.4	5.2~21.5	7~29.5
Rated cooling capacity	KW	2.5~7.5	3.8~10	4.5~14	5.6~16	7~20
Power consumption	KW	1~3	1.5~4.5	2~5.5	2.5~6.6	3~9
Voltage	V/Hz	220V/240V - Inverter - 1N	220V/380V - Inverter - 1N/3N	220V/380V - Inverter - 1N/3N	220V/380V - Inverter - 1N/3N	380V - Inverter - 3N
Rated heating water temperature	°C	Hot water:55°C / Heating:45°C / Cooling:12°C			Hot water:55°C / Heating:45°C / Cooling:12°C	
Refrigeration	/	R410a	R410a	R410a	R410a	R410a
Ambient temperature	/	(-25°C - 43°C)	(-25°C - 43°C)	(-25°C - 43°C)	(-25°C - 43°C)	(-25°C - 43°C)
Pipe diameter	°C	DN25	DN25	DN25	DN25	DN25

POLAR II SERIES

Split DC Inverter Heat Pump

DHW/Heating/Cooling Air Source
Heat Pump Expert



Product parameter

Model name		NL-C3BFII/R	NL-C5BFII/R
Rated heating capacity	KW	2.6~9.5	4.5~20
Rated hot water capacity	KW	2.2~10	4~19.4
Rated cooling capacity	KW	2.7~6.6	4.5~14
Power consumption	KW	1~3	2~5.5
Voltage	V/Hz	220V - Inverter - 1N	220V/380V - Inverter - 1N/3N
Rated heating water temperature	°C	Hot water:55°C / Heating:45°C / Cooling:12°C	
Refrigeration	/	R410a	
Ambient temperature	/	(-25°C — 43°C)	
Pipe diameter	°C	DN25	

PIONEER SERIES

R32 FULL DC INVERTER AIR SOURCE HEAT PUMP

DHW/Heating/Cooling Air Source
Heat Pump Expert



NL-BKDX30-95II/R32,NL-BKDX40-150II/R32,NL-BKDX50-200II/R32

Product parameter

Model name		NL-BKDX30-95II/R32	NL-BKDX40-150II/R32	NL-BKDX50-200II/R32
Rated heating capacity	KW	2.8~10	3.8~16	5.5~21
Rated hot water capacity	KW	2.5~9.5	3.5~15.5	4.5~20
Rated cooling capacity	KW	2.5~7.5	3.8~11	4.8~14.5
Power consumption	KW	1~3	1.5~4.5	2~5.5
Voltage	V/Hz	220V/240V - Inverter - 1N		380V/415V - Inverter - 3N
Rated heating water temperature	°C	Hot water:55 °C / Heating:45 °C / Cooling:12 °C		
Refrigeration	/	R32		
Ambient temperature	/	(-25 °C — 43 °C)		
Pipe diameter	°C	DN25		

Brand New DC Inverter Household All In One Heat Pump

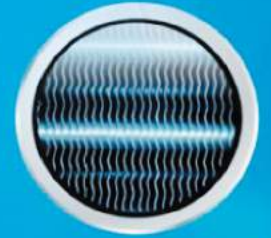


- ▶ 2KW heater build in.
- ▶ R32 new compressor.
- ▶ WI-FI function.
- ▶ Heating, Cooling , DHW functions.
- ▶ Linked switch signal connection.
- ▶ RS485 signal connection.
- ▶ 3-way valves signal connection.



Product parameter

Model name		NL-B245II/R32	NL-B345II/R32
Rated heating capacity	kW	3.0-8.5	5.0-12.5
Rated hot water capacity	kW	3.0-8.0	5.0-12.0
Rated cooling capacity	kW	2.5-5.0	4.0-7.0
Heating power consumption	kW	1.0-2.0	1.0-3.3
Hot water power consumption	kW	1.0-2.0	1.0-3.3
Cooling power consumption	kW	1.0-1.8	1.0-2.5
Voltage	V/Hz	220V~240V - Inverter - 1N	
Rated heating water temperature	℃	Hot water:55℃ / Heating:45℃ / Cooling:12℃	
Rated water flow	m³/h	1.5	1.8
Refrigeration and volume	/	R32/1300g	R32/1800g
Compressor	/	Mitsubishi Inverter	Mitsubishi Inverter
Outdoor unit	Net size	mm	900*350*1250
	Weight	kg	90
	Noise level	dB(A)	≤50
Operation ambient temperature	℃	(-25℃ - 43℃)	
Water tank heat exchanger	Liter	70	80
Pipe diameter	mm	DN20	DN20
Packing size	mm	1020*470*1500	1085*470*1600
Auxiliary Element built-in	KW	2	2



Huge evaporator with strong heating exchanging ability

The evaporator has 40% larger heat exchange area than other suppliers. Ensure that the strong heating capacity can be output stably in the ultra-low temperature.

Ultra-quiet double fans with greater air flowing volume

The design of double fan reduces the noise by 20% compared with single fan. The overall air flow rate will also be greatly increased, speeding up the heat transfer rate.



Mitsubishi DC Inverter Compressor

Quickly heating&energy saving,automatic to change the power input,- adapted dual-rotor balance technology,operation peaceful,low noise and longer life time.Stably running down to -25℃,heating capacity output increased 200% in low temperature.

Dual rotor
Dc inverter

R32
Refrigerant

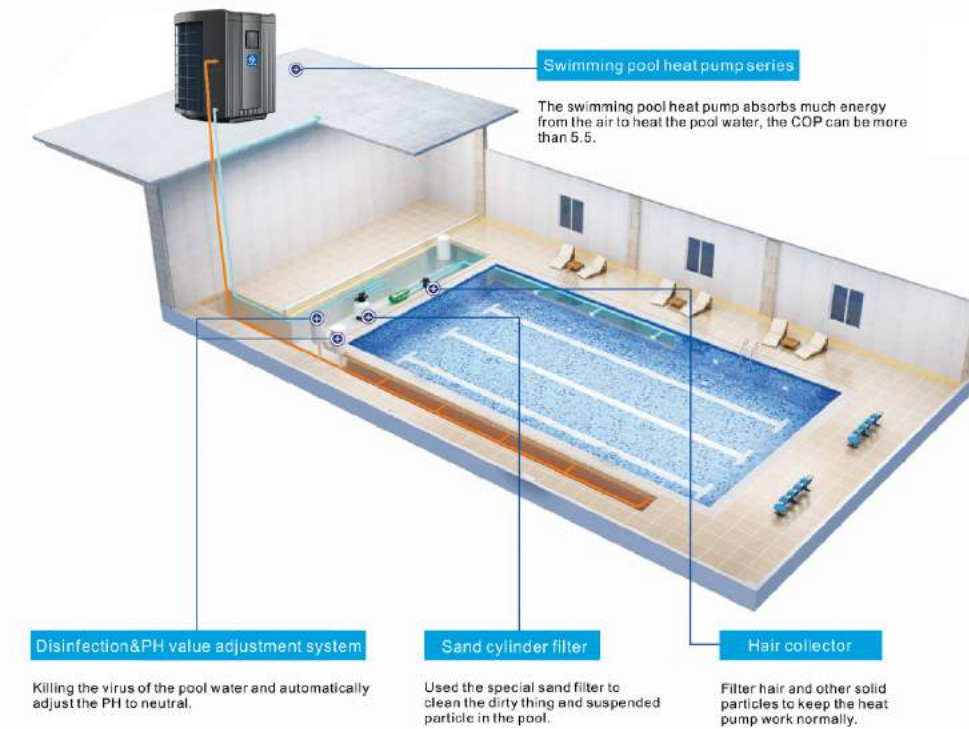
-25℃
Operation

200%
Heat Output

SEAL INVERTER SERIES

Swimming pool heating/ cooling application expert

All in One Household DC Inverter
Heat Pump Water Heater



Product parameter

Model name	NL-PB25Y/32	NL-PB35Y/32	NL-PB50Y/32	NL-PB60Y/32	NL-PB70Y/32	NL-PB80Y/32	
Heating:(Air 26℃ Water 26℃ /Humidity 80%)	Capacity(KW) Power input(KW) COP(W/W)	7.6 0.13~1.27 16.16~6.23	10.2 0.2~1.63 14.5~6.26	16.3 0.32~2.77 14.5~5.89	18.4 0.35~3.07 14.98~5.99	21.2 0.41~3.41 14.7~6.22	25.2 0.48~4.25 14.62~5.93
Heating:(Air 15℃ Water 26℃ /Humidity 70%)	Capacity(KW) Power input(KW) COP(W/W)	5.48 0.14~1.17 7.62~4.67	7.2 0.22~1.42 6.84~5.07	12 0.37~2.69 8.26~4.46	14.3 0.44~3.2 8.26~4.47	16.5 0.49~3.64 8.25~4.53	18.4 0.58~4.22 8.27~4.36
Advised pool volume	15~40	20~50	35~70	40~80	45~90	50~100	
Power source	220V-1N/50Hz					220V-1N/50Hz 380V-3N/50Hz	
Operating ambient temp	(-15℃ ~ 43℃)						
Casing type	ABS Plastic						
Functons	Heating & Cooling						
Refrigerant	R32	R32	R32	R32	R32	R32	
Max Current(A)	7.2	9	16	17.5	19	26/13.5	
Power cable(mm²)	3x2.5	3x2.5	3x4	3x4	3x6	3x6	
Circuit breaker(A)	9	12	18	20	22	28/16	
Sound pressure@1M dB(A)	36~46	38~49	41~50	42~51	43~53	44~53	
Sound pressure@2M dB(A)	20~26	21~30	23~31	24~32	25~36	26~37	
Compressor type	Twin-rotary DC Inverter						
Condenser	Spiral titanium tube in PVC						
Evaperator	Hydrophilic aluminium fins & copper tubes						
Fan type	DC motor fan - Horizontal						
Fan quantity	1 PCS						
Advised water flow(m3/h)	2~3	3~4	5~7	6~8	7~9	8~10	
Water connection(mm)	50	50	50	50	50	50	
Unit dimensions(W*D*H)(mm)	832*338*586	832*338*586	935*370*656	935*370*656	1118*415*749	1118*415*749	
Packing dimensions(W*D*H)(mm)	930*430*640	930*430*640	990*435*720	990*435*720	1180*530*850	1180*530*850	
Net weight(KG)	34.3	35.2	47.8	54.3	67.3	74.5	
Gross weight(KG)	38.3	39	52	58.3	74.5	81.5	

SURFER SERIES

R32 Mini Spa Pool Air Source Heat Pump



Product parameter

Model name	NL-M10Y/32	NL-M15Y/32	NL-M18Y/32	NL-M22Y/32
Heating:(Air 26℃ Water 26℃ /Humidity 80%)	Capacity(KW)	2.91	4.2	5.2
	Power input(KW)	0.58	0.83	1.07
	COP(W/W)	4.98	5.04	4.89
Heating:(Air 15℃ Water 26℃ /Humidity 70%)	Capacity(KW)	1.8	2.86	4.08
	Power input(KW)	0.55	0.76	1.04
	COP(W/W)	3.29	3.79	3.92
Advised pool volume	5~15	10~20	12~22	12~25
Power source	220V~240V ~50hz~1 phase			
Operating ambient temp	(7℃ ~ 43℃)			
Casing type	Galvanized steel case			
Funtions	Heating only			
Refrigerant	R32	R32	R32	R32
Max Current(A)	2.39	3.31	4.73	5.87
Power cable(mm ²)	Rubber cable with RCD main plug(Plug & play)			
Circuit breaker(A)	9	12	24	28
Sound pressure@2M dB(A)	48	49	49	49
Compressor type	Rotary			
Condenser	Hydrophilic types piral aluminium tube in PVC			
Evaperator	Hydrophilic aluminium fins & copper tubes			
Fan type	Horizontal			
Fan quantity	1 PCS			
Advised water flow(m3/h)	1~2	1~2	1.5~2.5	2~3
Water connection(mm)	32	32	38	38
Unit dimensions(W*D*H)(mm)	305*303*367	369*327*440	440*440*490	440*440*490
Packing dimensions(W*D*H)(mm)	400*370*430	435*420*510	530*520*550	530*520*550
Net weight(KG)	19.5	27	36	40
Gross weight(KG)	20.5	30.8	42	46

POLAR II SERIES

Household domestic hot water expert

All in one heat pump water heater

R134A

75°C



Product parameter

Model name	Unit	NL-FR1.0/EN150	NL-FR1.0/EN200	NL-FR1.0/EN250	NL-FR1.0/EN300
Heating capacity	Kw	1.8	1.8	3	3
Water tank Volume	L	150	200	250	300
Hot water production	L/h	39	39	64	64
Power supply	V/Hz/Ph	220V~240V/50/1			
Water temp	°C	Rated water temperature 55 °C / Maximum water temperature 75 °C			
Rated input power	W	407	407	508	508
Current	A	1.85	1.85	2.3	2.3
Auxiliary electric heating	W	2000	2000	2000	2000
E-heating current	A	9.1	9.1	9.1	9.1
Refrigerant	/	R134a	R134a	R134a	R134a
Material of water tank	/	Enamel tank			
Heat exchanger type	/	External coil			
Pipe diameter	inch	G1/2"	G1/2"	G3/4"	G3/4"
Built-in pressure protection	MPa	0.8MPa	0.8MPa	0.8MPa	0.8MPa
Product Dimensions	mm	φ570*1470	φ570*1750	φ640*1780	φ640*2000
Net Weight	Kg	85	112	125	142
Noise	dB(A)	≤48	≤48	≤48	≤51

Capacities and power inputs based on the following conditions: - Heating: Ambient temperature 20 °C/12 °C, water temperature from 15 °C to 55 °C.

Mini hot water heat pump water heater



Product parameter

Model name	Unit	B1.0S-P	B1.5S-P	B2.0S-P	B3.0S-P	
Rated Heating capacity	KW	3.525	5.1	7.2	10.3	
Input power	KW	0.86	1.24	1.79	2.55	
Voltage(V)	V/Hz	220V~240V ~ 50Hz				
Rated output water temperature	°C	55°C				
Max output water temperature	°C	60°C				
Rated output water quantity	L	76	109	145	225	
Refrigeration	/	R410a				
Control mode	/	Microcomputer central processor (linear control)				
Compressor	Form	Rotation type				
	Quantity	1				
	Brand	Mitsubishi				
Outdoor unit	Net size	mm	772*323*496	896*402*538	942*372*548	1010*401*622
	Weight	Kg	56	63	67	100
	Nosie level	dB(A)	<50			
Fan	/	internal rotor motor, plastic leaves				
Ambient temperature	/	(-10°C ~ 43°C)				
Inlet pipe diameter	/	3/4"				
Outlet pipe diameter	/	3/4"				
Optional	/	Wilo water pump build-in -----				
Test condition : DB/WB : 20°C/15°C Water Input : 15°C Water Output : 55°C						

Commercial heating/cooling Expert Air to Water Heat Pump



Product parameter

Item	NERS-	G/3K	G/4K	G/5K	G/6K	G/10K	G/12K	G/15K	G/20K	G/24K	
Rated heating capacity	W	8400	12800	15000	18500	29500	34120	40150	52500	68000	
Input power for heating	W	2795	3780	4690	5820	9380	11040	13200	17800	22300	
Rated cooling capacity	W	7480	10180	12800	16310	26170	31040	37600	50200	63800	
Input power for cooling	W	2560	3500	4400	5600	9010	10580	12800	17100	21900	
Voltage	V/Hz	380V-50Hz-3phases				380V-50Hz-3phases					
Rated AC water temperature	°C										
Max water temperature	°C										
Rated output water quantity	L	250	320	420	450	830	960	1180	1600	1940	
Refrigeration	/										
Control mode	/										
Compressor	Form										
	Quantity	/	1	1	1	1	2	2	2	2	2
	Brand										
Condenser	Form	Spiral pipe				Spiral pipe					
	pipe diameter	DN	32	32	32	32	40	40	40	65	65
	Flow Rate	m3	1.8	2.7	3.8	4.5	7.5	9.6	12.0	15.6	17.3
Fan	Form	internal rotor motor, magnesium aluminum alloy leaves				internal rotor motor, magnesium aluminum alloy leaves					
	Fan power	W	250	250	370	370	2*500	2*500	2*500	2*740	2*740
Unit	Net size	mm	710*710*846	710*710*846	850*850*1100	850*850*1100	1600*850*1280	1600*850*1330	1600*850*1330	2000*1100*1780	2000*1100*1980
	Weight	Kg	175	188	165	190	345	345	430	550	691
	Nosie level	dB(A)	54	54	60	60	64.5	64.5	64.5	70	70
Inlet pipe diameter	/	DN25	DN25	DN25	DN40	DN40	DN40	DN40	DN80	DN80	
Outlet pipe diameter	/	DN25	DN25	DN25	DN40	DN40	DN40	DN40	DN80	DN80	

High temperature air to water heat pump water heater



Product parameter

Item	NERS-	G/2B	G/3B(II)	G/3B(III)	G/4B	G/5B		G/6B	G/8B	G/10B	G/12B	G/15B	G/24B	G/30B	
Rated heating capacity	KW	8070	11.4KW	11.4KW	16.5KW	19.7KW		23.57KW	30kw	38.5KW	44.7KW	65	90.3KW	112KW	
Input power	KW	1970	2.57KW	2.57KW	3.67KW	4.45KW		5.3KW	7.5KW	8.73KW	10.11KW	12.5	20.3KW	27.8KW	
Voltage	V/Hz	220V-50Hz		380V-50Hz	220V-50Hz	380V-50Hz		380V-50Hz	380V/50Hz	380V-50Hz	380V-50Hz	380V-50Hz	380V-50Hz	380V-50Hz	
Rated output water temperature	°C				55 -- 75°C						55 -- 75°C				
Rated output water quantity (L)	L	170	240	250	355	420		507	645	830	960	1185	1940	2430	
Refrigeration	/				R407C						R407C				
Control mode	/	Microcomputer central processor (linear control)						Microcomputer central processor (linear control)							
Compressor	Form	/				Scroll type						Scroll type			
	Quantity	/	1	1	1	1	1		1	2	2	2	2	2	
	Brand	/				Copeland						Copeland			
Unit	Net size	mm	605*550*750	719*719*944	720*720*945	829*829*1122	830*830*1122		830*830*1122	1555*870*1322	1555*870*1322	1555*870*1322	1555*870*1322	2120*980*1920	2120*980*1920
	Weight	Kg	64	94	94	120	127		138	325	325	340	360	750	850
	Nosie level	dB(A)	45	54	54	58	60		60	64.5	64.5	64.5	64.5	74	74
Fan	Form	/	internal rotor motor, ABS material fan blade						internal rotor motor, ABS material fan blade						
ambient temperature	°C				(-10°C ~ 43°C)						(-10°C ~ 43°C)				
Inlet pipe diameter	/	DN20	DN20	DN20	DN25	DN25		DN25	DN40	DN40	DN40	DN40	DN80	DN80	
Outlet pipe diameter	/	DN20	DN20	DN20	DN25	DN25		DN25	DN40	DN40	DN40	DN40	DN80	DN80	

Commerical hot water heat pump water heater



Product parameter

Item		NERS-	G/2B	G/3B(II)	G/3B(III)	G/4B	G/5B		G/6B	G/8B	G/10B	G/12B	G/15B	G/24B	G/30B	
Rated heating capacity	KW		8070	11.4KW	11.4KW	16.5KW	19.7KW		23.57KW	30kw	38.5KW	44.7KW	65	90.3KW	112KW	
Input power	KW		1970	2.57KW	2.57KW	3.67KW	4.45KW		5.3KW	7.5KW	8.73KW	10.11KW	12.5	20.3KW	27.8KW	
Voltage	V/Hz		220V-50Hz		380V-50Hz	220V-50Hz		380V-50Hz	380V-50Hz	380V/50Hz	380V-50Hz	380V-50Hz	380V-50Hz	380V-50Hz	380V-50Hz	
Rated output water temperature	°C							55 -- 60°C						55 -- 60°C		
Rated output water quantity (L)	L		170	240	250	355	420		507	645	830	960	1185	1940	2430	
Refrigeration	/							R407C						R407C		
Control mode	/		Microcomputer central processor (linear control)										Microcomputer central processor (linear control)			
Compressor	Form	/						Scroll type						Scroll type		
	Quantity	/	1	1	1	1	1		1	2	2	2	2	2	2	
	Brand	/						Copeland						Copeland		
	Net size	mm	605*550*750	719*719*944	720*720*945	829*829*1122	830*830*1122		830*830*1122	1555*870*1322	1555*870*1322	1555*870*1322	1555*870*1322	2120*980*1920	2120*980*1920	
Unit	Weight	Kg	64	94	94	120	127		138	325	325	340	360	750	850	
	Nosie level	dB(A)	45	54	54	58	60		60	64.5	64.5	64.5	64.5	74	74	
Fan	Form	/	internal rotor motor, ABS material fan blade										internal rotor motor, ABS material fan blade			
ambient temperature	°C							(-10°C ~ 43°C)							(-10°C ~ 43°C)	
Inlet pipe diameter	/		DN20	DN20	DN20	DN25	DN25		DN25	DN40	DN40	DN40	DN40	DN80	DN80	
Outlet pipe diameter	/		DN20	DN20	DN20	DN25	DN25		DN25	DN40	DN40	DN40	DN40	DN80	DN80	

EVI Commerical hot water heat pump water heater



Product parameter

Item		NERS-B3S-D	NERS-B4S-D	NERS-B5S-D	NERS-G10D	NERS-G20D	NERS-G40D	NERS-G60D	
Rated heating capacity	KW	10.4	15.5	19.7	38.5	72	140	210kW	
Input power	KW	2.38	3.83	4.69	9.38	18.5	35.4	53.85kW	
Voltage	V/Hz/Ph	220/50/1 380/50/3	380/50/3	380/50/3	380/50/3	380/50/3	380/50/3	380/50/3	
Rated current	A	11/3.7	5.8	8.4	16.8	33.1	63.3	96.3	
Rated output water temperature	°C		55°C Max temp 60°C			55°C Max temp 60°C			
Hot water output	L/H	250	380	420	830	1504	3010	4514	
Refrigeration	/		R407C			R407C			
Control mode	/	Microcomputer central processor (LCD control panel)			Microcomputer central processor (LCD control panel)				
Compressor	Form	/	Scroll type			Scroll type			
	Quantity	/	1	1	1	2	2	4	6
	Brand	/	Copeland			Copeland			
Unit	Net size	mm	1105x452x904	1108x489x1257	1108x489x1257	1507*853*1350	2120*980*1920	2180*1797*1806	2910*2300*3000
	Weight	Kg	98	160	165	345	750	1450	2300
	Nosie level	dB(A)	≤50	≤55	≤55	≤64.5	≤70	≤76	≤78
Fan	Form	/	internal rotor motor, magnesium aluminum alloy leaves(low noise)			internal rotor motor, magnesium aluminum alloy leaves(low noise)			
	Fan power	W	250	370	370	500*2	740*2	740*4	740*6
ambient temperature	°C		(-25°C -- 43°C)			(-25°C -- 43°C)			
Inlet pipe diameter	/	DN20	DN25	DN25	DN40	DN65	DN80	DN80	
Outlet pipe diameter	/	DN20	DN25	DN25	DN40	DN65	DN80	DN80	

EVI Commercial heating/cooling Expert Air to Water Heat Pump



Product parameter

Item	NERS-	B/3KD	B/5KD	G/10KD	G/20KD	G/40KD	
Rated heating capacity	KW	9.9	17.5	35	72	134	
Rated cooling capacity	KW	7.8	13.7	27.4	56	112	
Rated input power	KW	2.35	4.56	9.12	18.5	36.5	
Max input power	KW	3.29	6.5	13.1	27.2	51.1	
Voltage (V)	V/Hz	220v-1phase		380V-3phase			
Rated output cool water temp	°C	8°C~12°C					
Rated output heating water temp	°C	25°C~40°C					
Refrigeration	/	R407C					
Control mode	/	Microcomputer central processor (linear control)					
Compressor	Form	EVI Scroll type					
	Quantity	/	1	1	2	2	4
	Brand	Copeland					
Unit	Net size	mm	1105×452×904	1135×518×1257	1507×853×1350	2050×980×1910	2180×1800×1806
	Weight	Kg	90	138	345	750	1450
	Nosie level	dB(A)	≤54	≤54	≤ 64.5	≤74	≤76
Fan	Form	/	ABS plastic leaves		magnesium aluminum alloy leaves		
	Fan power	W	250	200*2	500*2	740*2	740*4
Ambient temperature	°C	(-25°C -- 46°C)					
Inlet pipe diameter	/	DN20	DN25	DN40	DN65	DN80	
Outlet pipe diameter	/	DN21	DN25	DN40	DN65	DN80	

Geothermal water source/ Ground source heat pump



Product parameter

Item		NL-02S	NL-03S	NL-03S/380	NL-05S	NL-06S	NL-10S	NL-12S	NL-15S	NL-20S	NL-25S	
Heating capacity	Kw	7.6	11.8	11.8	21.3	25.2	42.6	50.4	56.7	74.8	99.4	
Heating input power	Kw	1.7	2.6	2.6	4.4	5.2	8.8	10.6	12.5	16.8	21.5	
COP	/	4.47	4.54	4.54	4.84	4.85	4.84	4.75	4.54	4.45	4.62	
Cooling capacity	Kw	3.82	7.8	7.8	14	16.5	28	33	37.1	49.4	67	
Cooling input power	Kw	1.23	2.5	2.5	4.2	4.8	8.4	10	12	16	20.5	
EER	/	3.11	3.12	3.12	3.33	3.44	3.33	3.3	3.09	3.09	3.27	
Current	A	11	11	5.9	8	10.8	16	19	24	35	40	
Voltage	V/Hz	220V-50Hz/1Ph					380V-50Hz/3Ph					
Rated/Max water temp	/	55°C / 60°C										
Using side water flow	m ³ /H	2	2	2.5	4.3	4.8	8.5	9.8	12.3	16.0	20.0	
Source side water flow	m ³ /H	3.0	3.0	3.4	5.8	6.7	11.5	13.0	15.5	21.2	27.0	
Water pressure drop	kPa	40	40	40	50	50	60	65	68	70	75	
Refrigeration	/	R410A										
Control mode	/	Microcomputer central processor (wire controller)										
	Type	Scroll	Scroll	Scroll	Scroll	Scroll	Scroll	Scroll	Scroll	Scroll	Scroll	
Compressor	Qty	1	1	1	1	1	2	2	2	2	2	
	Brand	Copeland/Hitachi										
Heat Exchanger	/	Double-pipe heat exchanger						Shell and tube heat exchanger				
Throttling device	/	Emerson Thermal expansion valve										
Evaporator	/	Plate heat exchanger										
Water pipe diameter	/	DN25	DN25	DN25	DN25	DN32	DN32	DN50	DN50	DN50	DN65	
	dB(A)	≤50	≤50	≤50	≤50	≤50	≤60	≤60	≤64	≤66	≤66	
Unit	mm	710*520*1000	710*520*1000	710*520*1000	710*520*1000	710*520*1000	1280*830*800	1280*830*800	1320*840*1130	1750*1120*1160	2000*1120*1160	
	Kg	95	95	95	150	160	300	320	340	650	680	

Pictures and Commercial Terms in the next page

Cooling: source side inlet/outlet water temp: 35°C/30°C, load side inlet/outlet water temp: 12°C/7°C;

Heating: source side inlet/outlet water temp: 15°C/10°C, load side inlet/outlet water temp: 50°C/55°C;

Enamel water tank / buffer tank



Product parameter

Model name	Unit	NL-E150L	NL-E200L	NL-E260L	NL-E300L	NL-E500L
Volum	L	150L	200L	260L	300L	500L
Size(MM)	mm	470*1510	510*1615	570*1590	570*1805	600*1900
Inner tank material	/	SPCC	SPCC	SPCC	SPCC	SPCC
Inner tank thickness(MM)	mm	2.0+0.05	2.0+0.05	2.0+0.05	2.0+0.05	2.0+0.05
Insulation materials	/	Polyurethane	Polyurethane	Polyurethane	Polyurethane	Polyurethane

SUS304/306/2205 stainless steel water tank / buffer tank



Product parameter

Model name	Tank volume(L)	Liner material	Liner specifications (MM)	Form factor (MM)	Insulation Materials	Package size(mm)
NL-T40L	40L	SUS304/316/2205	&1.0/Φ370	Φ470*525	50mm Polyurethane	540*540*565mm
NL-T60L	60L	SUS304/316/2205	&1.0/Φ370	Φ470*725	50mm Polyurethane	540*540*765mm
NL-T80L	80L	SUS304/316/2205	&1.0/Φ370	Φ470*850	50mm Polyurethane	540*540*890mm
NL-T100L	100L	SUS304/316/2205	&1.0/Φ370	Φ470*1115	50mm Polyurethane	540*540*1155mm
NL-T120L	120L	SUS304/316/2205	&1.0/Φ370	Φ470*1325	50mm Polyurethane	540*540*1365mm
NL-T150L	150L	SUS304/316/2205	&1.2/Φ370	Φ470*1545	50mm Polyurethane	540*540*1585mm
NL-T200L	200L	SUS304/316/2205	&1.4/Φ420	Φ520*1545	50mm Polyurethane	595*595*1585mm
NL-T250L	250L	SUS304/316/2205	&1.4/Φ470	Φ560*1625	50mm Polyurethane	630*630*1665mm
NL-T300L	300L	SUS304/316/2205	&1.5/Φ470	Φ560*1915	50mm Polyurethane	630*630*1955mm
NL-T400L	400L	SUS304/316/2205	&1.8/Φ600	Φ700*1625	50mm Polyurethane	780*780*1665mm
NL-T500L	500L	SUS304/316/2205	&1.8/Φ600	Φ700*1915	50mm Polyurethane	780*780*1955mm
NL-T600L	600L	SUS304/316/2205	/	Φ700*2200	50mm Polyurethane	780*780*2240mm
NL-T800L	800L	SUS304/316/2205	/	Φ900*1700	50mm Polyurethane	980*980*1740mm
NL-T1000L	1000L	SUS304/316/2205	/	Φ900*2100	50mm Polyurethane	980*980*2140mm
NL-T1500L	1500L	SUS304/316/2205	/	Φ1100*2200	50mm Polyurethane	1180*1180*2240mm
NL-T2000L	2000L	SUS304/316/2205	/	Φ1200*2400	50mm Polyurethane	1280*1280*2440mm

Fan coil unit for heating/cooling

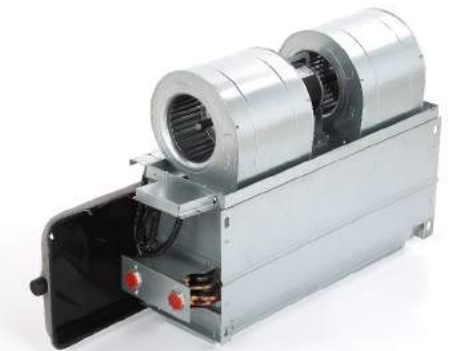
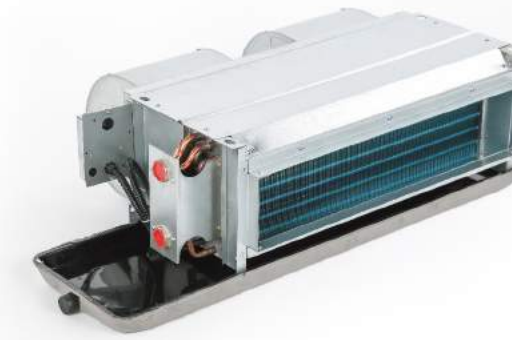


Product parameter

Model name: NL-	FP-34KM	FP-51KM	FP-68KM	FP-85KM	FP-102KM	FP-136KM	FP-170KM	FP-204KM	FP-238KM
air volume (m3/h)	High 340 Middle 280 Low 180	510 390 260	680 520 350	850 640 430	1020 790 520	1360 1030 690	1700 1290 860	2040 1500 1032	2380 1800 1200
Rated cooling capacity(kw)	1.98	2.98	3.68	4.98	5.58	7.2	9.9	10.8	12.6
Rated heating capacity(kw)	2.987	4.8	5.48	7.2	8.18	10.8	14.5	16.2	18.9
Water flow rate (m3/h)	0.42	0.52	0.62	0.86	0.98	1.08	1.58	1.78	1.92
Hydraulic resistance(Kpa)	7	9	11	18	19	22	30	32	35
Water capacity/L	1.65	1.66	1.67	2.03	2.06	2.09	2.88	2.98	3.08
Noise level dB(A)	37	39	41	43	45	46	47	59	52
Motor Power/W	12	15	15	22	25	30	40	40	70
Input power/W	35	50	58	72	92	126	128	152	200
Current/A	0.16A	0.23	0.28	0.36	0.43	0.59	0.67	0.85	0.98
Voltage V/P/Hz	220V/1P/50HZ								
Controller	Remote control /Wire control								
Net size (mm)	580*580*290			720*720*290			830*830*290		
Package size (mm)	720*720*380			860*860*380			1000*1000*380		
Panel size (mm)	650*650*30			800*800*30			950*950*30		
Net weight(kg)	23			29			38		
Pipe size	ZG3/4" (DN20)								

Product parameter

Model	FP-68BG	FP-85BG	FP-102BG
Air volume (m3/h)	High 680 Middle 470 Low 360	850 685 585	1020 780 600
Cooling capacity(btu)	High 12000 Middle 3600 Low 2150	18000 4500 2750	24000 5400 3290
Cooling capacity (w)	High 3600 Middle 2610 Low 2150	4500 3440 2750	5400 3850 3290
Heating capacity (w)	High 5400 Middle 3950 Low 3700	6750 5160 4130	8100 5780 5000
Power Input [w]	50	60	75
Water flow rate [m3/h]	0.6	0.8	0.9
Water pressure drop [kPa]	25	30	35
Noise dB(A)	≤45	≤48	≤48
Max working pressure [MPa]	2		
Chilled water temperature	7℃-12℃		
Standard External Pressure	12 Pa		
Hot water temperature	65℃- 60℃		
Supply power(V Hz)	Single phase A.C. 220V 50Hz		
Water pipe	ZG3/4"		
Outside measurement (L*W*H)	890*200*280	1000*225*320	1080*240*350
Weight(Kg)	12.5	14	16



Product parameter

Specification		FP-34(200)	FP-51(300)	FP-68(400)	FP-85(500)	FP-102(600)	FP-136(800)	FP-170(1000)	FP-204(1200)	FP-238(1400)
nominal air volume (m3/h)	High	340	510	680	850	1020	1360	1700	2040	2380
	Middle	260	390	520	650	780	1040	1290	1580	1820
	Low	180	270	360	450	530	710	890	1060	1240
Cooling capacity (w)	High	1800	2700	3600	4500	5400	7200	9000	10800	12600
	Middle	1620	2450	3240	4050	4850	6480	7980	9580	11200
	Low	1430	1990	2650	3220	3820	5140	6400	7480	8960
Heating capacity (w)	High	2700	4050	5400	6750	8100	10800	13500	16200	18900
	Middle	2450	3680	4860	6120	7275	9980	11960	14200	16520
	Low	2160	3240	4300	5200	6400	8600	9200	10800	12960
Conventional type noise dB(A)		≤35	≤36	≤38	≤40	≤43	≤44	≤45	≤46	≤49
High static press noisiness dB(A)		≤39	≤41	≤43	≤45	≤48	≤49	≤50	≤52	≤54
Input power(w)	Standard type	41	54	65	82	98	132	168	206	247
	Overpressure type	45	58	76	89	110	165	195	228	273
Outlet static press of unit (Pa)		12Pa,30Pa,50Pa								
Electric power		Signal phase 220v 50HZ								
thermal sink		louvered aluminum thermal sink, spacing of fine is 2.2mm								
No. of wind wheel(n)		2	2	2	2	2	2	3	4	4
Heat exchanger	Model	3-row aluminum								
	Structure model	copper stringing roll aluminum fin								
	working pressure	1.2Mpa								
	water pipe branching	DN20 pipe								
	condensed water connecting hose	DN20 pipe								
water volume (kg/h)		350	480	680	780	910	1140	1270	1320	1460
hydraulic resistance (kpa)		15	20	30	35	45	35	35	38	40
Weight (kg)	Horizontal	16	19	21	22	23	25	35	38	45
	concealed(WA)									

Product parameter

Specification		FP-34(200)	FP-51(300)	FP-68(400)	FP-85(500)	FP-102(600)	FP-136(800)	FP-170(1000)	FP-204(1200)	FP-238(1400)
nominal air volume (m3/h)	High	340	510	680	850	1020	1360	1700	2040	2380
	Middle	260	390	520	650	780	1040	1290	1580	1820
	Low	180	270	360	450	530	710	890	1060	1240
Cooling capacity (w)	High	1800	2700	3600	4500	5400	7200	9000	10800	12600
	Middle	1620	2450	3240	4050	4850	6480	7980	9580	11200
	Low	1430	1990	2650	3220	3820	5140	6400	7480	8960
Heating capacity (w)	High	2700	4050	5400	6750	8100	10800	13500	16200	18900
	Middle	2450	3680	4860	6120	7275	9980	11960	14200	16520
	Low	2160	3240	4300	5200	6400	8600	9200	10800	12960
Conventional type noise dB(A)		≤35	≤36	≤38	≤40	≤43	≤44	≤45	≤46	≤49
High static press noisiness dB(A)		≤39	≤41	≤43	≤45	≤48	≤49	≤50	≤52	≤54
Input power(w)	Standard type	41	54	65	82	98	132	168	206	247
	Overpressure type	45	58	76	89	110	165	195	228	273
Outlet static press of unit (Pa)		12Pa,30Pa,50Pa								
Electric power		Signal phase 220v 50HZ								
thermal sink		louvered aluminum thermal sink, spacing of fine is 2.2mm								
No. of wind wheel(n)		2	2	2	2	2	2	3	4	4
Heat exchanger	Model	3-row aluminum								
	Structure model	copper stringing roll aluminum fin								
	working pressure	1.2Mpa								
	water pipe branching	DN20 pipe								
	condensed water connecting hose	DN20 pipe								
water volume (kg/h)		350	480	680	780	910	1140	1270	1320	1460
hydraulic resistance (kpa)		15	20	30	35	45	35	35	38	40
Weight (kg)	Horizontal	16	19	21	22	23	25	35	38	45
	concealed(WA)									